

The Sutton Series

BRLS - Strip Retrofit Kit

Project	Date
<input type="text"/>	<input type="text"/>
Part	Type
<input type="text"/>	<input type="text"/>



About The Sutton Series

The BRLS is an LED retrofit kit offering up to 50% in energy savings over a standard T8 fixture. It has been designed to covert existing 4ft and 8ft commercial or industrial strip fixtures from T8 or T12 to LED. Its flexibility and simple installation make it easy to take advantage of improved energy-efficiency and performance.

Specifications

Supported Voltage	120-277V, 347V, 120-347V, 480V
Available Sizes	4', 8' Length, 3", 4", 5" Width
Lifetime	L70 of 110,000+ hours, L90 of 34,000+ hours
Operating Temperature	-20°C/+25°C
Lumens	Lumen output ranging from 2L (2071lm) to 6L (6064lm)
CCT	2700K, 3000K, 3500K, 4000K, 5000K, 6500K
CRI	80+ standard, 90+ and 95+ available
Dimming	0-10V Standard

Approvals

- Dry and Damp Environment Rated
- Designed and Manufactured in Canada

Warranty

- 5 Year Comprehensive, 10 Year LED

The Sutton Series

BRLS - Strip Retrofit Kit

Retrofit Lighting by



Ordering Information

Fill in the fields below with your product selections. If you need help with this section, [contact your local sales professional](#).

Length
CRI & Colour Temperature

BRLS - **4'** - **4L** - **840** - **UNV**

Fixture Series
Lumen Output
Voltage

1	2	3	4	5	6	7							
BRLS													
Series	Length	Width		Lumen Output		CRI	CCT		Voltage				
BRLS	4'	3W	3" Wide'	4'-2L	2,133lm	8'-5L	5,432lm	8	80	27	2700K	UNV	120-
	8'	4W	4" Wide	4'-2.5L	2,675lm	8'-6L	6,660lm	9	90+	30	3000K		277V
		5W	5" Wide	4'-3L	3,221lm	8'-7L	7,396lm	1	95+	35	3500K	347	347V
				4'-3.5L	3,772lm	8'-8L	8,445lm			40	4000K	UN3	120-
				4'-4L	4,327 lm	8'-9L	9,000lm			50	5000K		347V
				4'-5L	4,327 lm	8'-10L	10,000lm			65	6500K	480	480V
				8'-4L	4,269lm								

Options

Lenses

BLANK | Frosted Lens

Finish

BLANK | Standard Gloss White

C5 | Matte Black

CUSTOM* | Custom Colour Choice

Dimming

B11 | 0-10V Dimming Leads

B12 | Line voltage dimming

B27 | Dim-to-off Driver

B** | Other Options Available*

Emergency Driver

B17 | UL924 10W Battery Backup

B36 | UL924 14W 2 Hour Battery Backup

F8 | UL924 Emergency Relay

Packaging

BLANK | Individually Boxed on Pallets

P0 | Bulk Packaging

Warranty

CL7 | 10-Year Comprehensive Warranty Upgrade

The Sutton Series




BRLS - Strip Retrofit Kit

Retrofit Lighting by



Certifications and Listings

Certifications that apply to this fixture and its possible configurations are listed here. More information available upon request.

Icon	Description
	Wireless Controls Available
	90 and 95+ CRI Options Available
	120-347V(UN3) Available

Usage Applications

This fixture can be used in a variety of applications, and is ideal for the following:

Usage Application
Retrofit Kit
Grocery Stores
Hospitals
Manufacturing Facilities
Offices
Retail Stores
Schools
Storage Facilities
Surface Mount

Warranty Statement

BJ Take products are tested and/or inspected prior to being packaged for shipment and are guaranteed from the day the product is shipped for a period of ten-year LED chip warranty and a five-year comprehensive component warranty. This can be upgraded to a ten-year comprehensive warranty on request.

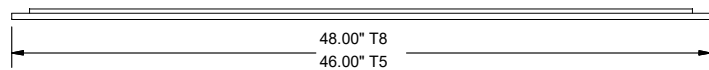
The Sutton Series

BRLS - Strip Retrofit Kit

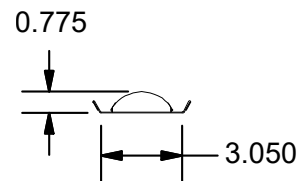
Retrofit Lighting by



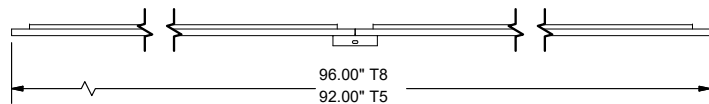
BRLS 4' Side



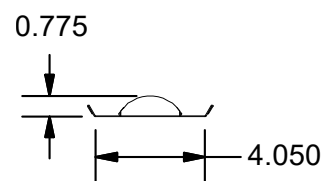
BRLS 3" End



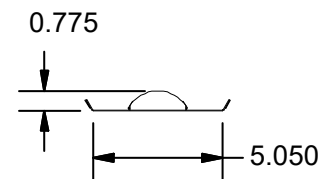
BRLS 8' Side



BRLS 4" End



BRLS 5" End



BRLR 1x4' Wattage

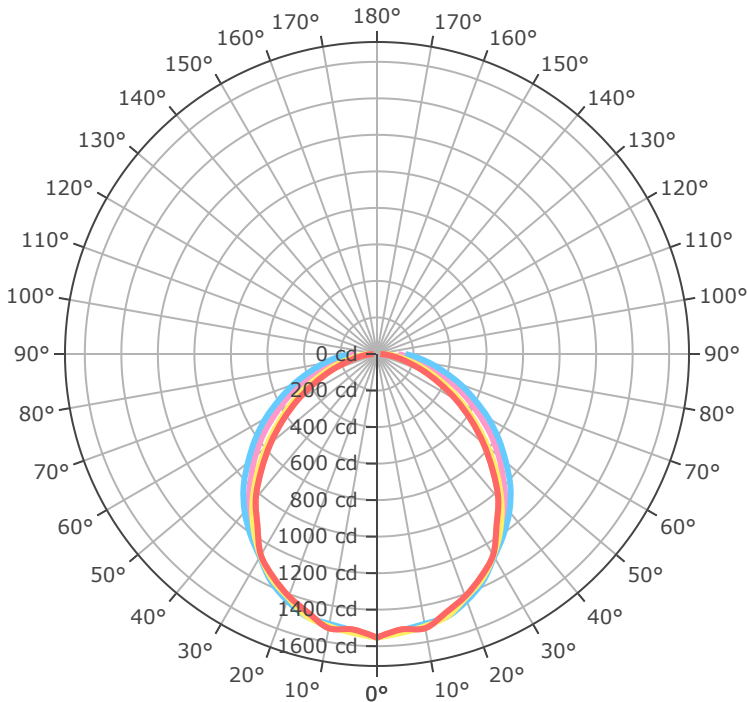
Length	Lumen Output	Actual Lumen Output	Fixture Wattage	Lumens per watt
4'	2.0	2133	17.34	123.0
4'	2.5	2675	21.66	123.5
4'	3.0	3221	25.97	124.0
4'	3.5	3772	30.29	124.5
4'	4.0	4327	34.60	125.1

BRLR 2x2' Wattage

Length	Lumen Output	Actual Lumen Output	Fixture Wattage	Lumens per watt
8'	4.0	4269	32.28	132.2
8'	5.0	5432	40.91	132.8
8'	6.0	6660	49.54	134.4
8'	7.0	7396	56.33	131.3
8'	8.0	8445	64.78	130.4

- * Drawings aren't to scale
- * Standard tolerances apply
- * Specifications may change without notice

BRLS-4'-4L-840



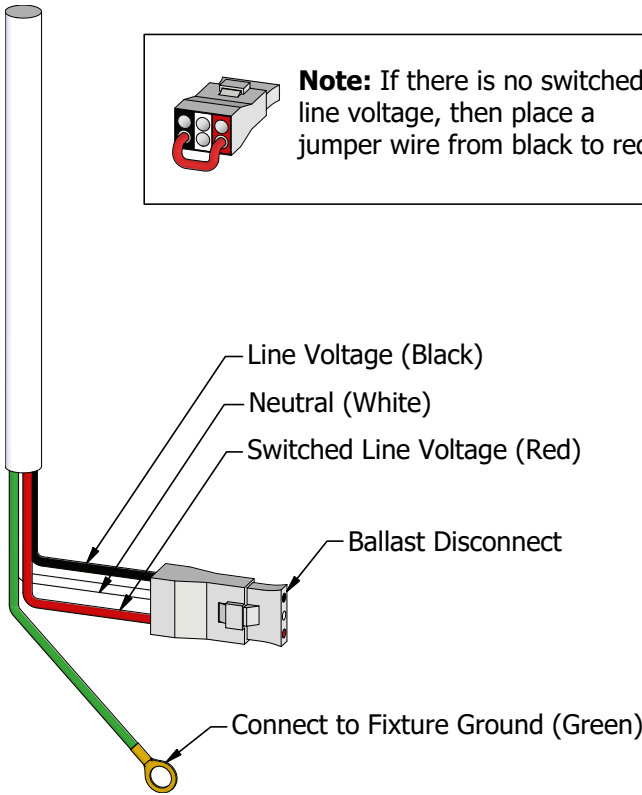
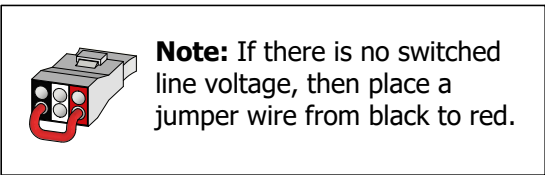
- 0.0°
- 45.0°
- 90.0°
- 135.0°
- 180.0°

Mtg Height	Light Level	Beam Diameter
6.0 ft	43.1 fc	14.0 ft
8.0 ft	24.3 fc	18.7 ft
10.0 ft	15.5 fc	23.3 ft
12.0 ft	10.8 fc	28.0 ft
14.0 ft	7.9 fc	32.7 ft
16.0 ft	6.1 fc	37.3 ft
24.0 ft	2.7 fc	56.0 ft
32.0 ft	1.5 fc	74.7 ft
40.0 ft	1.0 fc	93.3 ft
48.0 ft	0.7 fc	112.0 ft
56.0 ft	0.5 fc	130.7 ft
64.0 ft	0.4 fc	149.4 ft

Emergency Battery Plan - 10W

Emergency Lighting	Solution System Components	System Operation
Option Code 'B17' - UL 924 listed components that are factory installed in the luminaire	UL 924 listed 10-watt battery integral to the luminaire	Loss of normal power is detected by the B17 emergency light solution and the power supply is switched automatically to the 10-watt integral battery pack which powers the emergency LED lighting driver.
	UL 924 listed LED emergency lighting driver integral to the luminaire	The battery pack and emergency LED driver are UL 924 certified to provide a minimum of 90-minutes of emergency lighting.
	Wiring options for both switched and unswitched emergency lighting	

Emergency Lighting Wiring



Important Information

More information on emergency lighting options and configurations available on request.

The Sutton Series

BRLS - Strip Retrofit Kit

Retrofit Lighting by **BJTAKE**
LIGHTING

Gallery Information

Below you will find images of relevant products and configurations for the BRLS.

